

80X160CM

CATALOGUE 2023 - 9MM

The image features a light-colored background with a subtle, organic marbled pattern in shades of grey and beige. The pattern consists of irregular, vein-like shapes that flow across the frame. In the upper-left corner, there is a solid dark grey rectangular area. The word "GLOSSY" is centered in the lower-left quadrant of the image, rendered in a bold, black, sans-serif typeface.

GLOSSY

ARENA WHITE



80X160CM

GLOSSY

PEARS WHITE



80X160CM

GLOSSY

MINT STATUARIO



80X160CM

GLOSSY

ARMANI BIANCO

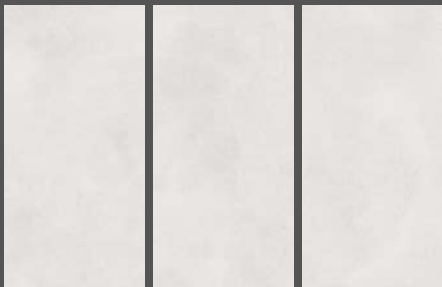


80X160CM

GLOSSY

MATT

ALEXA BIANCO



80X160CM

MATT

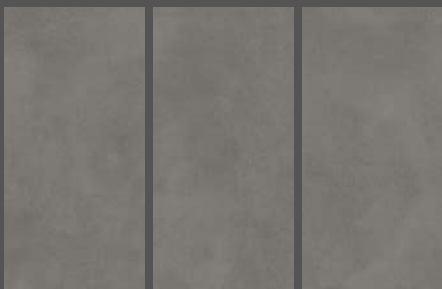
ALEXA STEEL



80X160CM

MATT

ALEXA DOVE



80X160CM

MATT

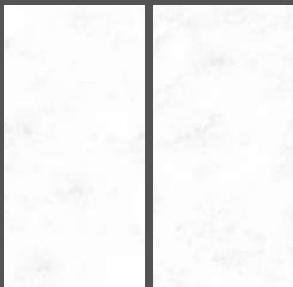
ALEXA NATURAL



80X160CM

MATT

SPARKLE WHITE



80X160CM

ROCKER

TECHNICAL SPECIFICATIONS

CHARACTERISTIC	STANDARD AS PER ISO-13006/EN 14411 GROUP B1a	MEAN VALUE OF POLISHED GVT	MEAN VALUE OF GVT / PGVT	TEST METHOD
REGULATORY PROPERTIES				
Deviation in length & width	±0.5 %	±0.1 %	±0.1 %	ISO-10545-2
Deviation in thickness	±5.0 %	±4.0 %	±4.0 %	ISO-10545-2
Straightness in side	±0.5 %	±0.1 %	±0.1 %	ISO-10545-2
Rectangularity	±0.5 %	±0.1 %	±0.1 %	ISO-10545-2
Surface flatness	±0.5 %	±0.2 %	±0.2 %	ISO-10545-2
Color difference	Unaltered	No change	No change	ISO-10545-16
Glossiness	As per mfg	Min 90%	Min 4%	GLOSSOMETER
STRUCTURAL PROPERTIES				
Water absorption	< 0.50 %	< 0.20 %	< 0.20 %	ISO-10545-3
Apparent density	> 2.0 g/cc	>2.10 g/cc	>2.10 g/cc	DIN 51082
MASSIVE MECHANICAL PROPERTIES				
Modulus Of Rupture	Min. 35 N/mm ²	Min. 40 N/mm ²	Min. 40 N/mm ²	ISO-10545-4
Breaking strength	Min. 1300 N	Min. 2000 N	Min. 2000 N	ISO-10545-4
Impact resistance	As per mfg	Min. 0.53	Min. 0.55	ISO-10545-5
SURFACE MECHANICAL PROPERTIES				
Surface abrasion resistance	As per mfg	Min Class-3	Min Class-4	ISO-10545-7
MOH's hardness	As per mfg	Min. 4	Min. 5	EN 101
THERMO HYDROMETRIC PROPERTIES				
Frost resistance	No damage	No damage	No damage	ISO-10545-12
Thermal shock resistance	No damage	No damage	No damage	ISO-10545-9
Moisture expansion	Nil	Nil	Nil	ISO-10545-10
Thermal expansion (COE)	Max. 5.0 x 10 ⁻⁶	Max. 6.5x10 ⁻⁶	Max. 6.5 x 10 ⁻⁶	ISO-10545-8
Crazing resistance	As per mfg.	Min. 10 Cycle	Min. 10 Cycle	ISO-10545-11
CHEMICAL PROPERTIES				
Chemical resistance	No damage	No damage	No damage	ISO-10545-13
Stain resistance	Resistant	Resistant	Resistant	ISO-10545-14
SAFETY PROPERTIES				
Slip resistance	As per mfg.	>040	>040	ISO-10545-17
Fire resistance	As per mfg.	Fire proof	Fire proof	N. A.
Lead & Cadmium given off by glazed tiles	As per mfg.	Does not yield Pb & Cd	Does not yield Pb & Cd	ISO-10545-15



Commercial Building



Hotel, Restoaurant



School, College



Hall & corridor



Mall & Super Market



Religious Place



Residential



Hospita



Airport



Gymnasium



Industry



Spa

80X160CM 9MM